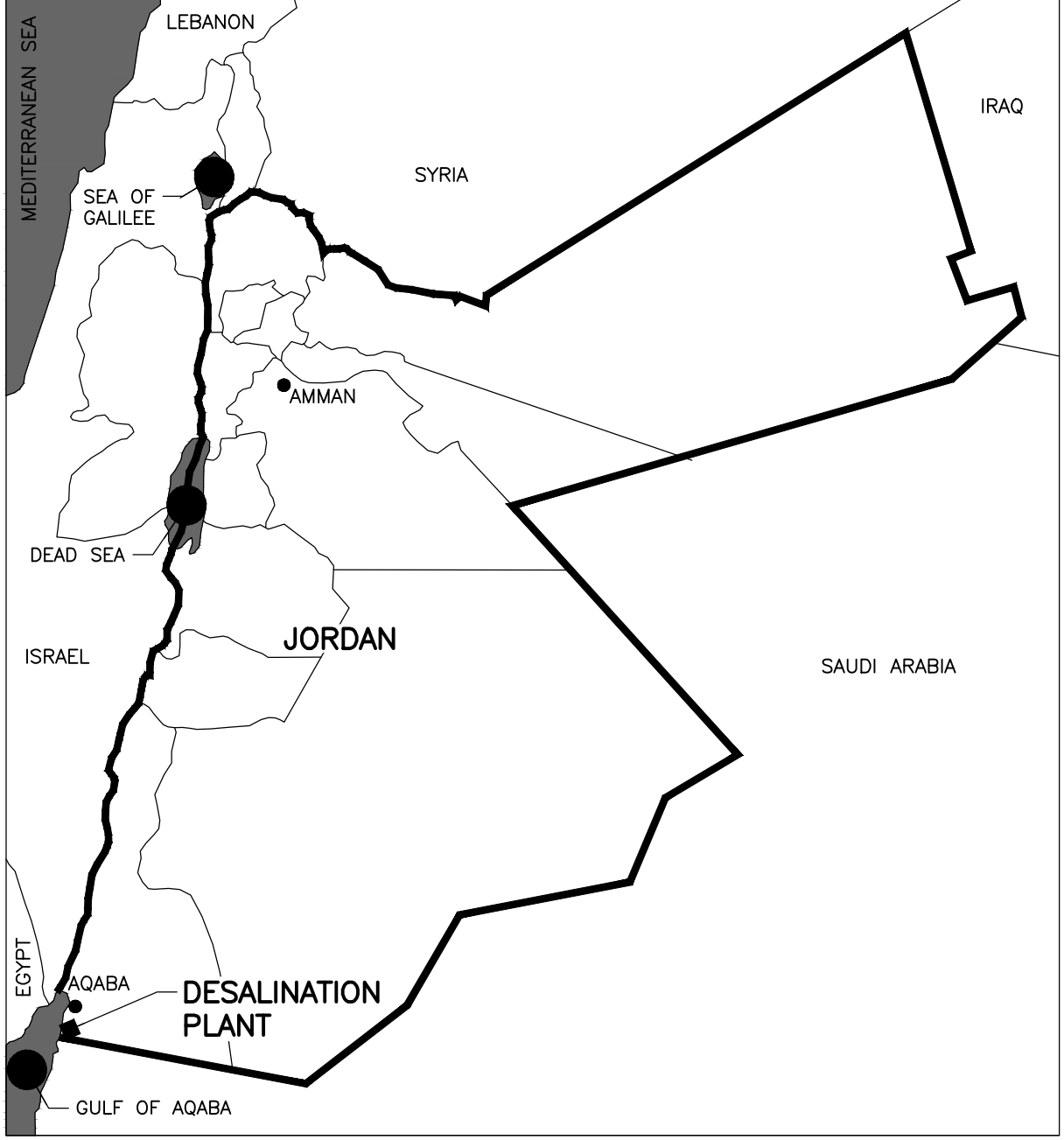
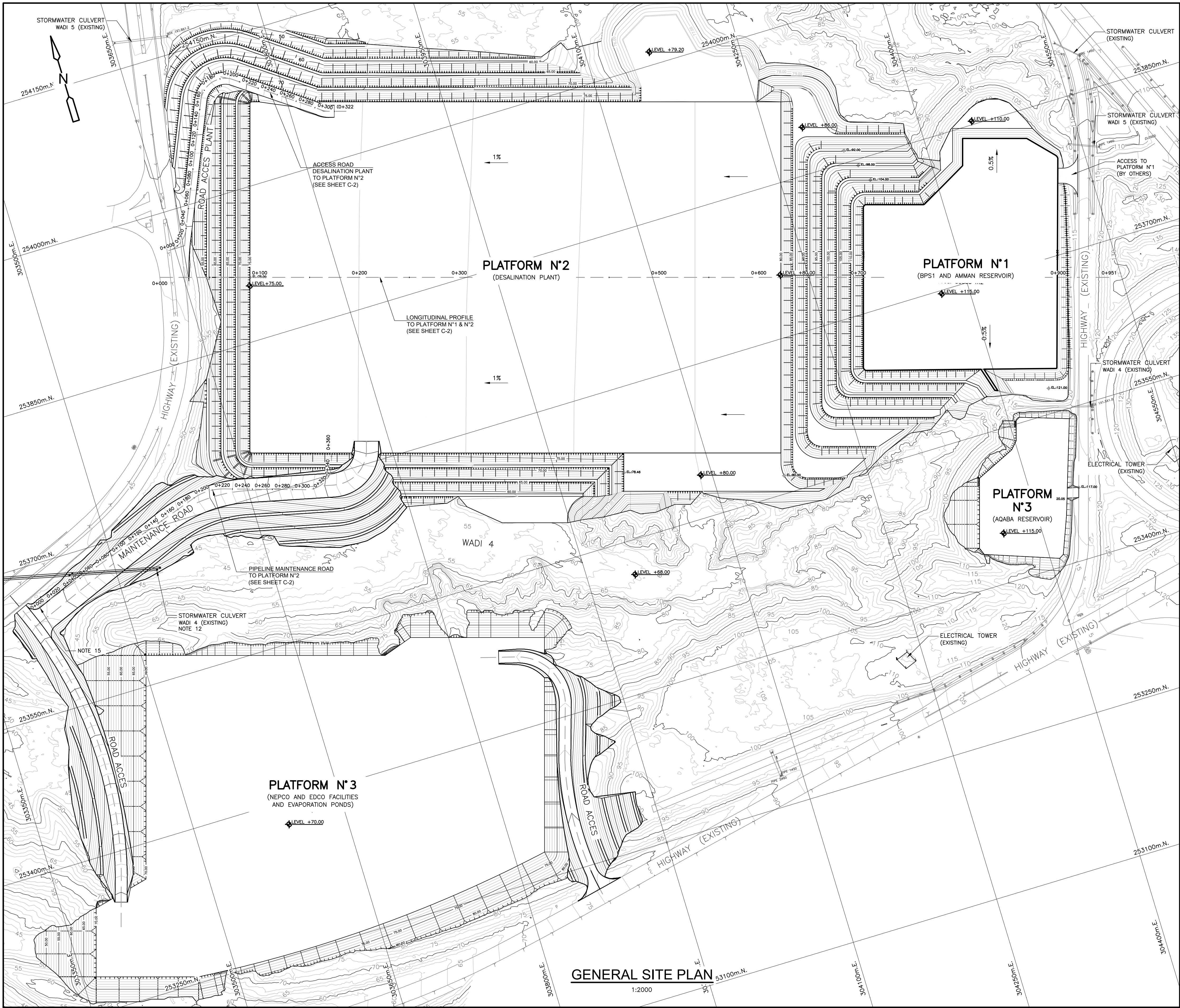


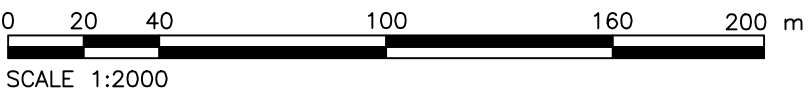
Plot Stamp - pw:\\commsvr01.cdm.com: PW\_x119930-3029 - USAID JORDAN WATER INFRASTRUCTURE PROJECT - Saved by: PALACIOSM On: 17/08/2021 Plotted on: 17/08/2021 16:59  
© 2020 CDM Smith All Rights Reserved.  
REUSE OF DOCUMENTS: THESE DOCUMENTS AND DESIGNS PROVIDED BY PROFESSIONAL SERVICE, INCORPORATED HEREIN, ARE THE PROPERTY OF CDM AND ARE NOT TO BE USED, IN WHOLE OR PART, FOR ANY OTHER PROJECT WITHOUT THE WRITTEN AUTHORIZATION OF CDM SMITH.



#### GENERAL NOTES:

1. TOPOGRAPHY SURVEY OF THE SITE PERFORMED BY DAR, DELIVERED TO CDM SMITH THROUGH 3D-R0-PLANT-G10-01-03-2020 FILE ON 04 MARCH 2020
2. COORDINATES ARE BASED ON ED50 / JORDAN TM.
3. DISTANCES IN METERS.
4. ELEVATIONS IN METERS ABOVE SEA LEVEL.
5. GEOTECHNICAL FIELD DATA FROM THE GEOTECHNICAL INVESTIGATION REPORT, DELIVERED TO CDM ON NOVEMBER 2020.
6. CIVIL AND GEOTECHNICAL CRITERIA STATED AT THE PRELIMINARY DESIGN REPORT
7. FOR MASS GRADING, EMBANKMENT SLOPES HAVE BEEN CONSIDERED AS 2:1(H:V).
8. SLOPES BENCHING HAS BEEN CONSIDERED WHEN SLOPES EXCEED 6 METERS HEIGHT, WITH 2.5 M WIDE MINIMUM BENCH.
9. RIPRAP SLOPE PROTECTION HAS BEEN CONSIDERED IN ALL EMBANKMENT SLOPES. THE PROTECTION CONSISTS OF 200 MM THICK LAYER STONE BEDDING AND 450 MM TICK LAYER RIPRAP STONE.
10. AT WADI SIDES, GABION PROTECTION HAS BEEN CONSIDERED AT THE TOE OF SLOPES TOE. THE HEIGHT OF THE GABIONS PROTECTION HAS BEEN DEFINED ACCORDING TO THE MEMORANDUM: HYDRAULIC ANALYSIS OF WADIS 4 & 5
11. BETWEEN PLATFORM 1 AND 2, GABION PROTECTION HAS BEEN CONSIDERED AT THE TOE OF SLOPE OF PLATFORM 1.
12. STORMWATER CULVERT TO BE REDESIGNED ACCORDING TO PLATFORM INTERFERENCES, INCLUDING POTENTIAL INTERFERENCES WITH INTAKE AND OUTFALL PIPELINES. THE MEMORANDUM: HYDRAULIC ANALYSIS OF WADIS 4 & 5 PROVIDES HYDRAULIC CONSIDERATIONS.
13. FOR STORMWATER DRAINAGE OF THE PLATFORMS, NECESSARY INFRASTRUCTURE SHOULD BE CONSIDERED TO SAFELY COLLECT, CONVEY AND DISPOSE OF THE RUNOFF FLOWS WHILE PREVENTING THE EROSION OF THE PLATFORMS, SLOPES AND DISCHARGE INTO THE WADIS.
14. FOR THE GENERAL LAYOUT OF THE DESALINATION PLANT, REVIEW DRAWING C4
15. PLATFORM AND PIPELINES CONTINUE ACCORDING TO CONVEYANCE AND MARINE WORKS PROJECT.

#### GRAPHIC SCALE



REV.	NO.	DATE	DRWN	CHKD	REMARKS

DESIGNED BY: H. ARAVENA  
DRAWN BY: I. PALACIOS  
SHEET CHK'D BY: G. VERGARA / T. NICHOLS  
CROSS CHK'D BY: R. MUÑOZ  
APPROVED BY: C. TOUPIOL  
DATE: AUGUST, 2021



USAID  
AQABA AMMAN WATER DESALINATION  
& CONVEYANCE PROJECT

DESALINATION PLANT  
CIVIL SITE PLAN  
GENERAL LAYOUT

PROJECT NO. 119930  
FILE NAME: 124193-CI-DWG-CG  
SHEET NO. C-G